

1 Type of the Paper: Article

2 Variability in the water footprint of arable crop 3 production across European regions

4 Anne Gobin ^{1,*}, Kurt Christian Kersebaum ², Josef Eitzinger ³, Mirek Trnka ^{4,5}, Petr Hlavinka ^{4,5},
5 Jozef Takáč ⁶, Joop Kroes ⁷, Domenico Ventrella ⁸, Anna Dalla Marta ⁹, Johannes Deelstra ¹⁰,
6 Branislava Lalić ¹¹, Pavol Nejedlik ¹², Simone Orlandini ⁹, Pirjo Peltonen-Sainio ¹³, Ari Rajala ¹³,
7 Triin Saue ¹⁴, Levent Şaylan ¹⁵, Ruzica Stričević ¹⁶, Višnja Vučetić ¹⁷, and Christos Zoumides ¹⁸

8 ¹ Flemish Institute for Technological Research (VITO); anne.gobin@vito.be

9 ² Leibniz-Centre for Agricultural Landscape Research (ZALF); ckersebaum@zalf.de

10 ³ University of Natural Resources and Life Sciences Vienna; josef.eitzinger@boku.ac.at

11 ⁴ Global Change Research Institute, The Czech Academy of Sciences; mirek_trnka@yahoo.com

12 ⁵ Institute of Agriculture Systems and Bioclimatology, Mendel University Brno; phlavinka@centrum.cz

13 ⁶ National Agricultural and Food Centre – Soil Science and Conservation Research Institute, Bratislava;
14 j.takac@vupop.sk

15 ⁷ Wageningen Environmental Research (Alterra); joop.kroes@wur.nl

16 ⁸ Consiglio per la Ricerca in Agricoltura e l'analisi dell'economia agraria, Unità di ricerca per i sistemi
17 colturali degli ambienti caldo-aridi, Bari (Italy); domenico.ventrella@crea.gov.it

18 ⁹ Department of Agrifood Production and Environmental Sciences (DISPAA) - University of Florence;
19 anna.dallamarta@unifi.it, simone.orlandini@unifi.it

20 ¹⁰ Norwegian Institute of Bioeconomy Research (NIBIO); johannes.deelstra@nibio.no

21 ¹¹ University of Novi Sad; branka@polj.uns.ac.rs

22 ¹² Earth Science Institute of Slovak Academy of Science Bratislava; nejedlik@yahoo.com

23 ¹³ Natural Resources Institute Finland (Luke); pirjo.peltonen-sainio@luke.fi, ari.a.rajala@luke.fi

24 ¹⁴ Estonian Crop Research Institute / Tallinn Technical University; triin.saue@etki.ee

25 ¹⁵ Department of Meteorology, Faculty of Aeronautics and Astronautics, Istanbul Technical University;
26 saylan@itu.edu.tr

27 ¹⁶ Faculty of Agriculture, University of Belgrade; sruzica@agrif.bg.ac.rs

28 ¹⁷ Meteorological and Hydrological Service; vucretic@cirus.dhz.hr

29 ¹⁸ Energy, Environment & Water Research Center, The Cyprus Institute; c.zoumides@cyi.ac.cy

30
31 * Correspondence: anne.gobin@vito.be; Tel.: +32-479-880804

32 Academic Editor: name

33 Received: date; Accepted: date; Published: date

34 **Abstract:** Crop growth and yield are affected by water use during the season: the green water
35 footprint (WF) accounts for rain water, the blue WF for irrigation and the grey WF for diluting
36 agri-chemicals. We calibrated crop yield for FAO's water balance model "Aquacrop" at field level.
37 We collected weather, soil and crop inputs for 45 locations for the period 1992-2012. Calibrated
38 model runs were conducted for wheat, barley, grain maize, oilseed rape, potato and sugar beet. The
39 WF of cereals could be up to 20 times larger than the WF of tuber and root crops; the largest share
40 was attributed to the green WF. The green and blue WF compared favourably with global
41 benchmark values ($R^2 = 0.64-0.80$; $d = 0.91-0.95$). The variability in the WF of arable crops across
42 different regions in Europe is mainly due to variability in crop yield ($\overline{cv} = 45\%$) and to a lesser
43 extent to variability in crop water use ($\overline{cv} = 21\%$). The WF variability between countries ($\overline{cv} = 14\%$)
44 is lower than the variability between seasons ($\overline{cv} = 22\%$) and between crops ($\overline{cv} = 46\%$). Though
45 modelled yields increased up to 50% under sprinkler irrigation, the water footprint still increased
46 between 1% and 25%. Confronted with drainage and runoff, the grey WF tended to overestimate
47 the contribution of nitrogen to the surface and groundwater. The results showed that the water
48 footprint provides a measurable indicator that may support European water governance.

49 **Keywords:** water footprint; arable crops; cereals; Europe; crop water use; yield

50 **PACS:** J0101

51

52 **1. Introduction**

53 The water footprint (WF) concept has created awareness of sustainable water use following a
54 global assessment of national production, consumption and international trade [1]. Traditional
55 water consumption statistics have been given for different sectors, such as domestic, agricultural
56 and industrial water use, but these show little about how much water is actually used. The water
57 footprint provides a way to compare water use of regions, sectors, commodities and nations.
58 Leading work in understanding water availability and risk has come from the food industries
59 through the analysis of water quantities that companies use throughout their supply chain. With
60 water being inherently local, the water footprint calculations highlight the risks of local exploitations
61 that could potentially disrupt both business operations and the surrounding community.

62 Water is a precious commodity, certainly in drought-prone regions and at times of drought in
63 any part of the world. The economic cost of drought has been enormous. In 2003, combined drought
64 and heat waves led to 30% reduction in primary productivity [2], and an estimated 13 billion € loss
65 in European agricultural production [3]. With water shortages already threatening growth, the
66 future of Europe's agriculture will be tied closely to water availability. In addition climate models
67 project that southern Europe will face increased drought and central Europe prolonged dry spells [4,
68 5] frequently combined with heat waves [6]. The rising population, coupled with increasing
69 demands by the agriculture and energy industries presents an interdependent relationship often
70 referred to as the water-food-energy nexus; the demand for water will likely outweigh supply by
71 2050 unless changes in food and energy preferences are implemented [7]. While access to water has
72 been recognized as a basic human right, the increasingly high demand for water resources should be
73 valued according to its supply.

74 The WF is closely linked to the concept of virtual water, which is the volume needed to produce
75 a commodity or service. Importing virtual water can be perceived as a partial solution to problems of
76 water scarcity, particularly in dry regions [8]. National, regional and global water and food security
77 can be improved when water-intensive commodities are traded from places where they are
78 economically viable to places they are not. Food import offers an alternative to reduce pressure on
79 domestic water resources and enables more productive water use as expressed by the WF of food [9].
80 Other research has taken a life cycle assessment (LCA) approach to evaluate the water footprint of
81 products, processes and organisations as initiated by [10]. Subsequently, an ISO 14046 standard was
82 set to specify the principles, requirements and guidelines [11]. The ISO standard may introduce
83 complexity by creating water footprints for each environmental impact, e.g. for water availability,
84 scarcity, eutrophication and eco-toxicity, across the life cycle of a product which is beyond the crop
85 water footprint that this research focuses on.

86 The WF of crops forms the basis for WF estimations of crop products and derived commodities
87 [12]. In terms of water volumes used, the crop WF estimations consider three major sources of water,
88 i.e. water from rain (green WF), irrigation (blue WF) and water for diluting chemicals (grey WF) [13].
89 In a comparison of different irrigation and water conservation methods for four locations, [14]
90 concluded that a combination of drip irrigation and synthetic mulching allowed for the largest
91 reduction in the WF of maize, potato and tomato. The inter-annual variability of the crop WF
92 highlighted *inter alia* the importance of increased yields for 22 crops for the period 1978-2008 in
93 China [15]. Understanding the variability is a prerequisite to making projections of good water
94 governance under different scenarios of global change. Our study contributes to understanding the
95 variability of the WF across regions, soils and annual weather conditions in Europe. We hypothesize
96 that the variability in the water footprint of arable crops across different regions in Europe is mainly
97 due to variability in crop yield and to a lesser extent to variability in crop water use. Therefore, the
98 objectives of this study were to quantify the variability in water used to grow arable crops across

99 different regions in Europe; to estimate their yield variability; to establish the variability in the WF of
 100 these different crops; and, to compare the results with benchmark values from global model
 101 estimates as in [16]. Understanding the sources of variability in the WF is important to elucidate
 102 water consumption patterns in relation to crop production, which in turn enables more efficient
 103 water management and agricultural water governance within the framework of a water-food-energy
 104 nexus.
 105

106 2. Materials and Methods

107 2.1. Data

108 We collected temperature, rainfall, wind speed, solar radiation and relative humidity data from
 109 41 meteorological stations across different regions in Europe for the period 1992-2012 (Table 1;
 110 Figure 1). Reference evapotranspiration was calculated using the modified Penman-Monteith
 111 approach [17]. The climatological diagrams of temperature, precipitation and evapotranspiration for
 112 these locations demonstrate a wide variation in weather conditions (Figure 2) and soils (Appendix
 113 A). The dominant soil type(s) for 45 locations were described in terms of texture; chemical
 114 composition; volumetric water content at saturation, field capacity and wilting point of different soil
 115 horizons up to 1.5 m or to an impervious layer. With the exception of polder regions, groundwater
 116 was absent and water leaching from the root zone was discharged as drainage. In each location
 117 major arable crops were selected for calculating the water footprint (Table 1).

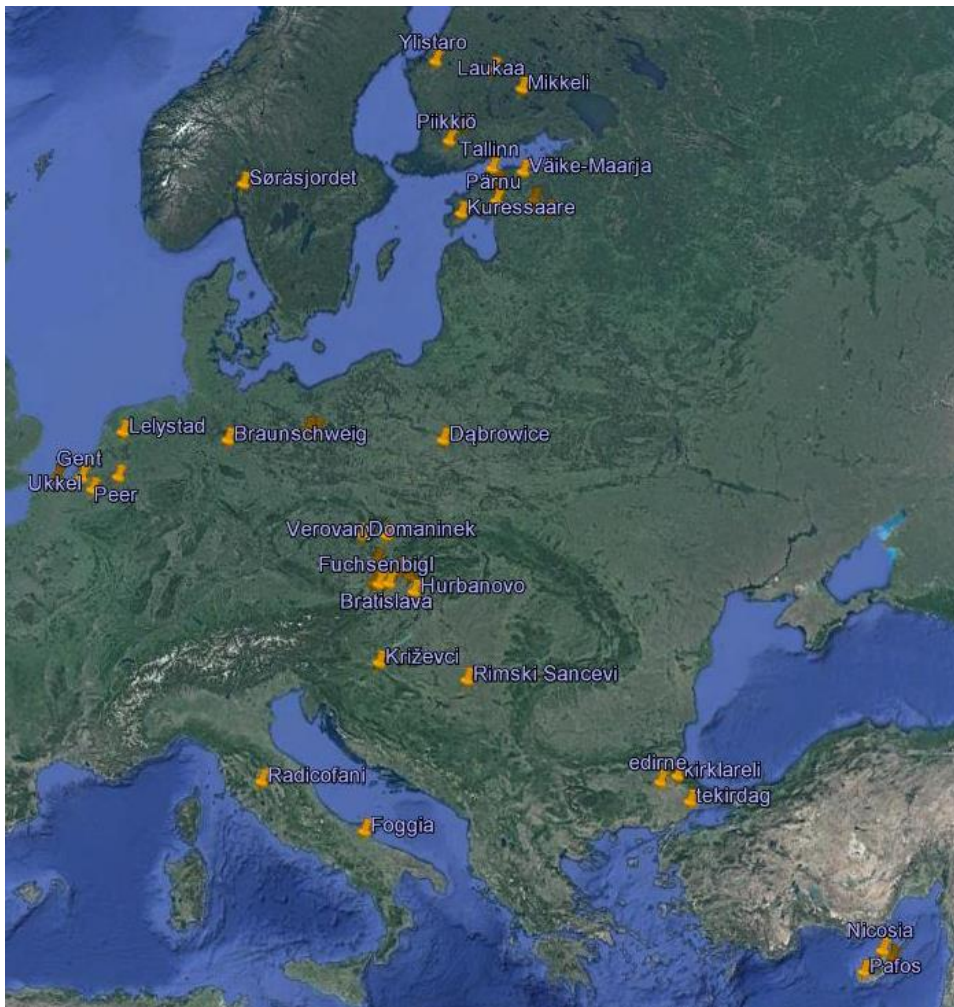
118

119 **Table 1.** Meteorological stations and crops per region (Location see Figure 1).

Country	Region	Meteo stations ¹	Major Crops ²
AT	Marchfeld	Gross Enzersdorf, Fuchsenbigl	WHB, BAR, MAZ, SBT
BE	Flanders	Koksijde, Gent, Ukkel, Peer	WHB, BAR, MAZ, SBT, POT
CY	Country	Nicosia, Pafos, Larnaca	WHD, POT, BAR, MAZ
CZ	Eastern Czech	Domaninek, Lednice, Verovany	WHB, BAR, MAZ, RAP
DE-1	Märk. Oderland	Muncheberg , Manschnow	WHB, BAR, SBT, RAP, POT, MAZ
DE-2	North-East Lower Saxony	Braunschweig	WHB, BAR, SBT
EE	Country	Kuusiku , Tartu, Tallinn, Võru, Pärnu, Väike-Maarja, Kuressaare	WHB, BAR, POT, RAP
FI-1	Häme	Jokioinen	BAR, WHB, BAR, POT, RAP
FI-2	South Finland	Mikkeli, Ylistaro, Laukaa, Piikio	BAR, WHB, BAR, POT, RAP
HR	Koprivnica- Križevci	Križevci	MAZ
IT-1	Foggia	Foggia	WHD, SBT
IT-2	Val d'Orcia	Radicofani	WHB, WHD, BAR
NO	South Eastern Norway	Søråsjordet	BAR
NL	Flevoland	Lelystad	WHB, POT, SBT, MAZ
PL	Mazovia	Dąbrowice	WHB, BAR, POT, SBT, RAP
SK	Danube Lowland	Bratislava-letisko , Hurbanovo, Nitra, Jaslovske Bohunice	WHB, BAR, MAZ
SR	Vojvodina	Rimski Sancevi	WHD, MAZ, SBT, POT
TR	Thrace	Edirne, Kırklareli , Tekirdağ	WHD, WHB, BAR, MAZ

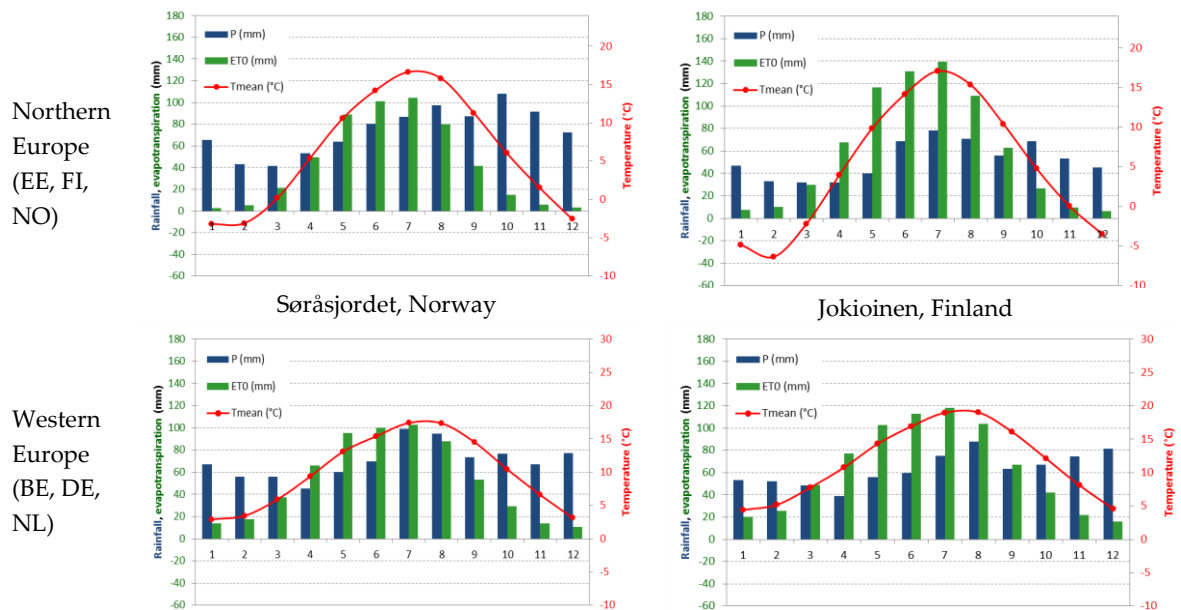
120 In bold are meteorological stations located in the vicinity of experimental fields.

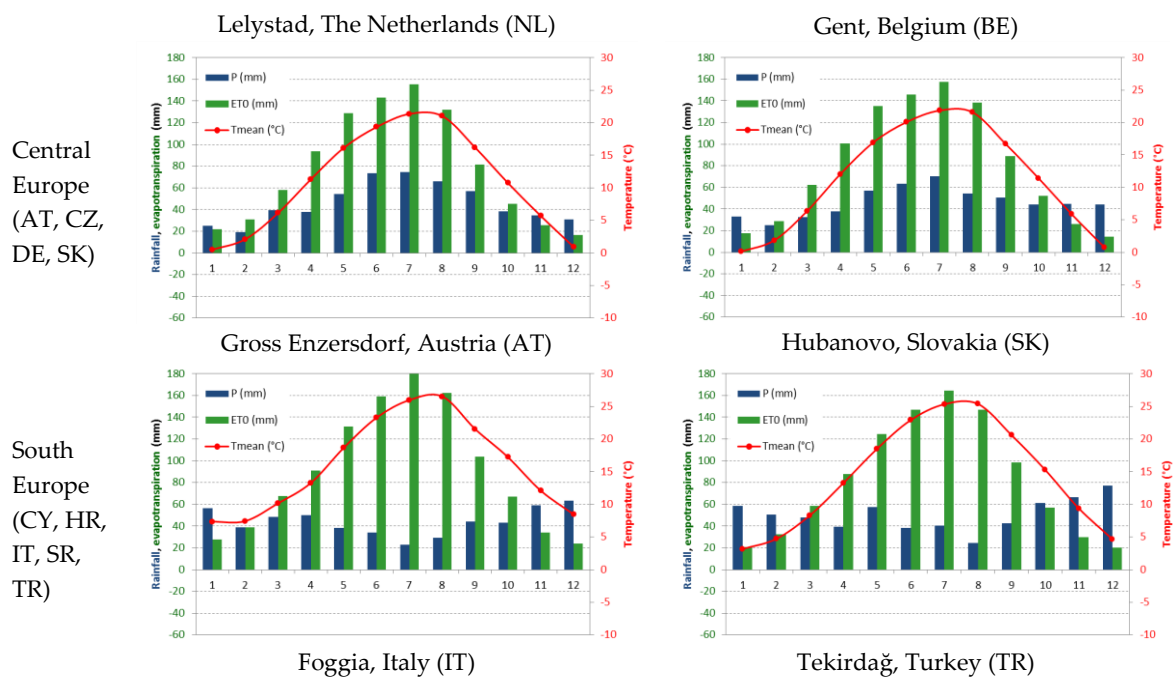
121 ² BAR is barley (*Hordeum vulgare* L.); MAZ is maize (*Zea mays* L.); POT is potato (*Solanum tuberosum* L.); SBT
 122 is sugar beet (*Beta vulgaris* L.); RAP is oilseed rape (*Brassica napus* L.); WHB is common wheat (*Triticum aestivum*
 123 L.); and, WHD is durum wheat (*Triticum turgidum* L.).
 124



125
 126 **Figure 1.** Location of different meteorological stations across Europe.

127





128 **Figure 2.** Climatological diagrams for different meteorological stations along a broad transect in Europe for the period 1992-2012. P is precipitation (mm); ET_0 is reference evapotranspiration (mm); T_{mean} is average
 129 temperature ($^{\circ}\text{C}$). A two letter code refers to the countries.
 130
 131

132 2.2. Crop water use

133 FAO's "Aquacrop" model version 5.0 [18] was used to calculate the crop water footprint. The
 134 growth module is evapotranspiration driven, where crop transpiration (T) is converted to biomass
 135 through a water productivity parameter [19, 20]. The evaporative power of the atmosphere (ET_0) is
 136 converted to actual evapotranspiration (ET) and separated into non-productive water fluxes, i.e. soil
 137 evaporation (E), and productive water fluxes, i.e. crop transpiration (T). Soil moisture conditions
 138 determine E from the soil surface not covered by canopy [19, 20]. Crop canopy expands from
 139 seedling to maturity as determined by accumulated growing degree days.

140 Crop calendar and growth characteristics were collected for the major arable crops in each
 141 location (Table 1). The crop growth parameters were set using experimental field data collected for
 142 each region (Appendix A, [21]). For regions without experimental field data available, crop growth
 143 parameters were derived from farmers' fields' data.

144 All weather, soil and crop input data (Figure 2; Appendix A) were inserted into the model. The
 145 model's phenological module was run in growing degree days to capture crop growth dynamics
 146 during the growing season. Rainfed model runs for the different locations were followed by
 147 sprinkler irrigation runs, at 80% field capacity, and according to local farm practices. Therefore,
 148 regions where no irrigation was reported were excluded from the irrigation model runs.
 149

150 2.3. Water footprint calculations

151 Irrigated agriculture receives water from irrigation (blue water) and from precipitation (green
 152 water), while rainfed agriculture only receives green water. Green water is originated by
 153 precipitation and is the soil water held in the unsaturated zone available to plants, while blue water
 154 refers to the manageable water in rivers, lakes, wetlands and aquifers [22]. The green WF and blue
 155 WF reflect the rainfed and irrigated crop water use per harvested crop with calculation methods
 156 established by [13]. The grey WF accounts for water used to dilute nutrient pollution to meet
 157 ambient water quality standards; for reasons of comparison we focused on nitrogen pollution [16].

$$WF_{green} = \frac{10 \cdot \sum_{d=1}^{l_{gp}} ET_{d,green}}{Y} \quad (1)$$

$$WF_{blue} = \frac{10 \cdot \sum_{d=1}^{l_{gp}} ET_{d,blue}}{Y} \quad (2)$$

$$WF_{grey} = \frac{[\alpha \cdot AR] / [c_{max} - c_{nat}]}{Y} \quad (3)$$

158

159

160

161

162

163

164

165

166

167

168

169

170

171

172

173

174

175

Where ET_d is the daily evapotranspiration in $\text{mm}\cdot\text{day}^{-1}$, accumulated over the length of the growing period (l_{gp} , in days), under rainfed (*green*) and irrigated (*blue*) conditions. The factor 10 converts water depths from millimetres into water volumes per land surface ($\text{m}^3\cdot\text{ha}^{-1}$). The nominator reflects crop water use in $\text{m}^3\cdot\text{ha}^{-1}$, whereas the denominator (Y) is crop yield in $\text{Mg}\cdot\text{ha}^{-1}$. The green water evapotranspiration under irrigated conditions was estimated as the total evapotranspiration simulated in a scenario without irrigation. The blue water evapotranspiration equalled the total evapotranspiration simulated in the scenario with irrigation minus the simulated green water evapotranspiration. For the grey WF, we assumed that the nitrogen fraction (α) that reached free flowing water bodies through leaching or runoff equalled 10% of the application rate (AR in $\text{kg}\cdot\text{ha}^{-1}\cdot\text{yr}^{-1}$). Fertilizer application rates were reduced significantly in the European Member States following the introduction of the Nitrates Directive in 1991 and the Water Framework Directive in 2000. Reporting mechanisms are in place so that nitrogen application rates and derived gross nitrogen balances are available from Eurostat for the period 1992-2012 [23]. Fertilizer consumption rates are available per hectare of arable land in the World Bank database [24]. We assumed drinking water standards for water quality with a difference between maximum acceptable and natural background concentration ($c_{max} - c_{nat}$) of $10 \text{ mg}\cdot\text{l}^{-1}$ [16].

176

2.4. Yield statistics

177

178

179

180

181

182

183

184

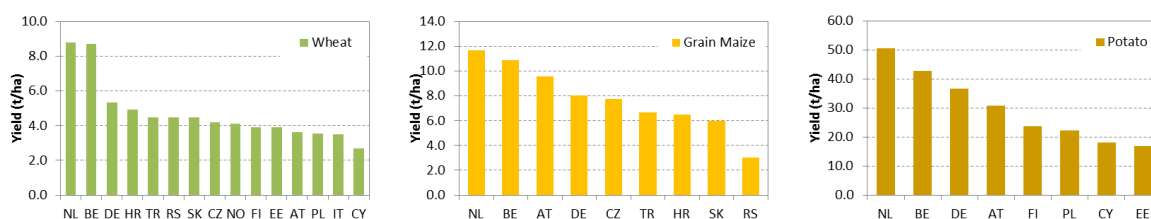
185

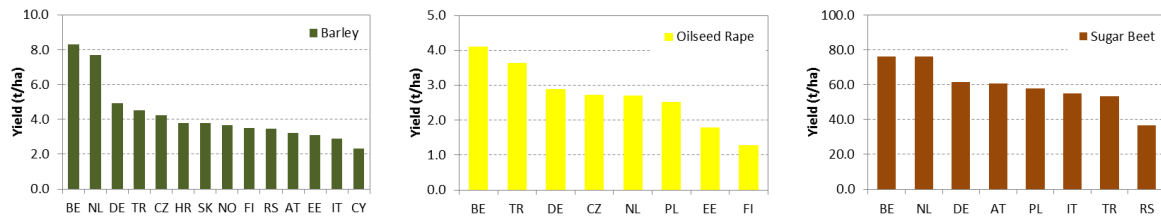
186

187

Yield is an important component of the WF. Yields, area and production of wheat, barley, grain maize, potato, sugar beet and oilseed rape differed distinctly across the different regions in Europe, as shown for 2012 regional statistical yields (Figure 3). The harvested production of cereals in 2012-2015 in the EU-28 was estimated at one ninth of global cereals production; wheat (44-47%), maize (21-22%) and barley (19-20%) account for a high share [25]. Despite a European-wide system of production quota, sugar beet remains the most important root crop for north-western Europe. Potato production is more widely spread across the different European Member States, as reflected by the presence of yield data in different regions (Figure 3). Oilseed rape, the main oilseed crop across Europe, showed an upward trend in production during the last decade due to its use for bioenergy purposes [25]. Regional statistical yields were compared with modelled yields assuming a humidity of 14% for cereals, 80% for root crops and 9% for oilseed rape [25].

188





189 **Figure 3.** Yields (Mg.ha⁻¹) for major arable crops across the European regions for the year 2012 based on regional
 190 statistics. A two letter code refers to the country that the region belongs to.
 191

192

193

193 2.5. Statistical analysis

194 The statistical analysis was done in R using the core functionalities [26] and the hydroGOF
 195 package [27]. Common statistical measures were used to describe the datasets. The coefficient of
 196 variation (*cv*), i.e. the ratio of the standard deviation to the mean expressed in %, was used to
 197 compare the spread of variables. The Pearson correlation coefficient (*r*²) was used as a measure of
 198 strength of an association between two variables. Statistical metrics to describe the agreement
 199 between modelled and statistical yields and between our and benchmark WFs were the mean
 200 average error (MAE), the root mean square error (RMSE) and the index of agreement (*d*) [27]. The
 201 regression lines on the graphs and the associated coefficient of determination (*R*²) were provided as
 202 a measure of how well the statistical yields or the benchmark WFs were approximated by our
 203 modelled results.
 204

205

205 3. Results

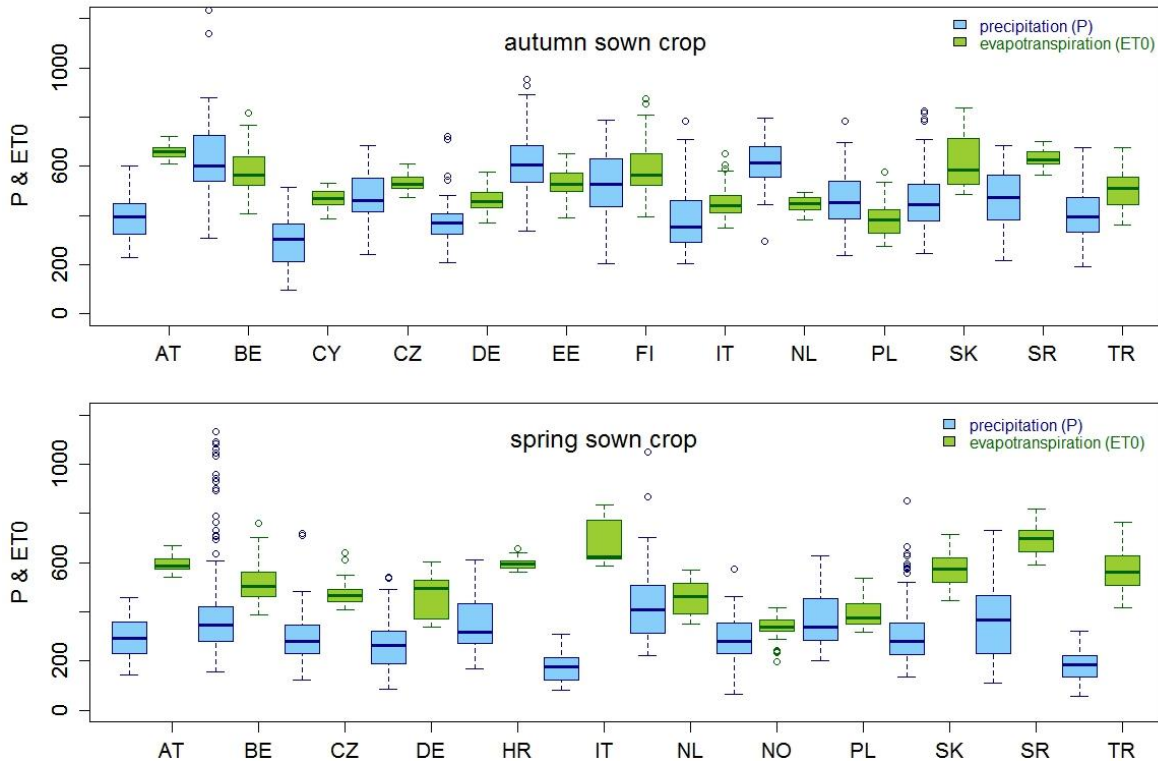
206 The water footprint (WF) of arable crops across different regions in Europe showed a large
 207 variability. We presented this large variability in relation to the different components that comprised
 208 the water footprint: evaporation and transpiration; biomass and yield; and, the green, blue and grey
 209 WF. Since these components were intrinsically linked to the water balance, a general comparison
 210 was made of the major water balance input and output.
 211

212

212 3.1. Water balance

213 The water balance was driven by reference evapotranspiration, calculated from solar radiation,
 214 wind speed, temperature and relative humidity using the modified Penman-Monteith equation [17].
 215 In all studied regions (Table 1), the reference evapotranspiration was higher than the precipitation
 216 accumulated over the growing season of spring sown crops (Figure 4). For autumn sown crops this
 217 difference was less pronounced. In northern and western European regions cumulative precipitation
 218 was higher than cumulative evapotranspiration during the growing season for the period 1992-2012.
 219 Simulated sub-surface drainage was in all cases higher than simulated surface runoff, but this
 220 difference was not always significant (Figure 5). A surplus on the water balance led to higher runoff
 221 and drainage during the growing season, and vice versa for a deficit. Due to higher precipitation
 222 during winter a surplus occurred during the growing season of autumn sown crops (Figure 5).
 223

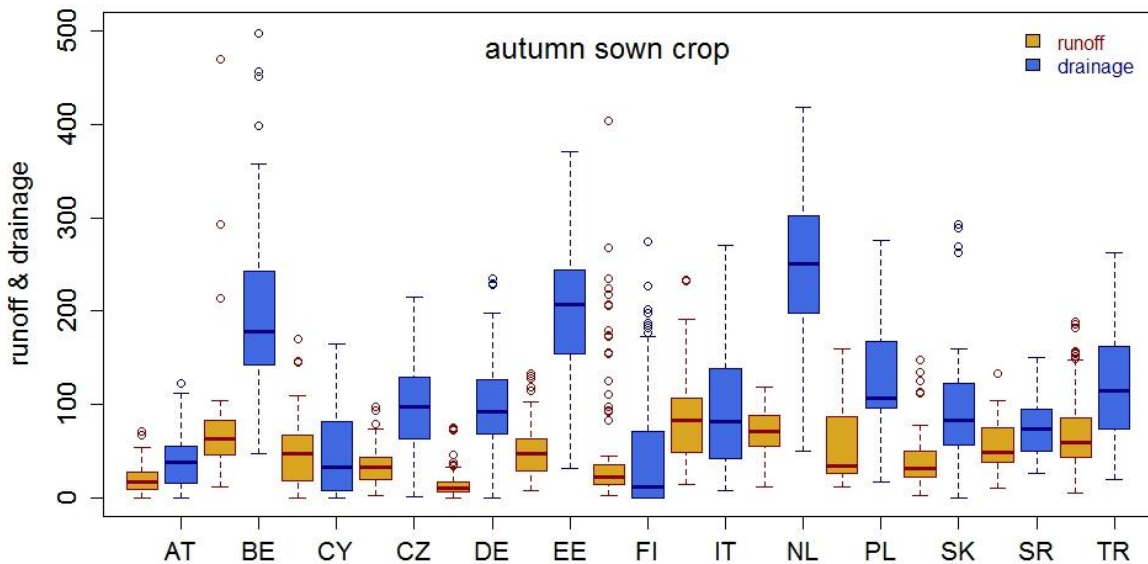
223



224

225 **Figure 4.** Precipitation (P in mm) and reference evapotranspiration (ET0 in mm) during the growing season of
 226 autumn and spring sown crops across the European regions for the period 1992-2012. A two letter code refers to
 227 the country that the region belongs to.

228



229

230 **Figure 5.** Runoff (mm) and drainage (mm) during the growing season of autumn sown crops across the
 231 European regions for the period 1992-2012. A two letter code refers to the country that the region belongs to.

232

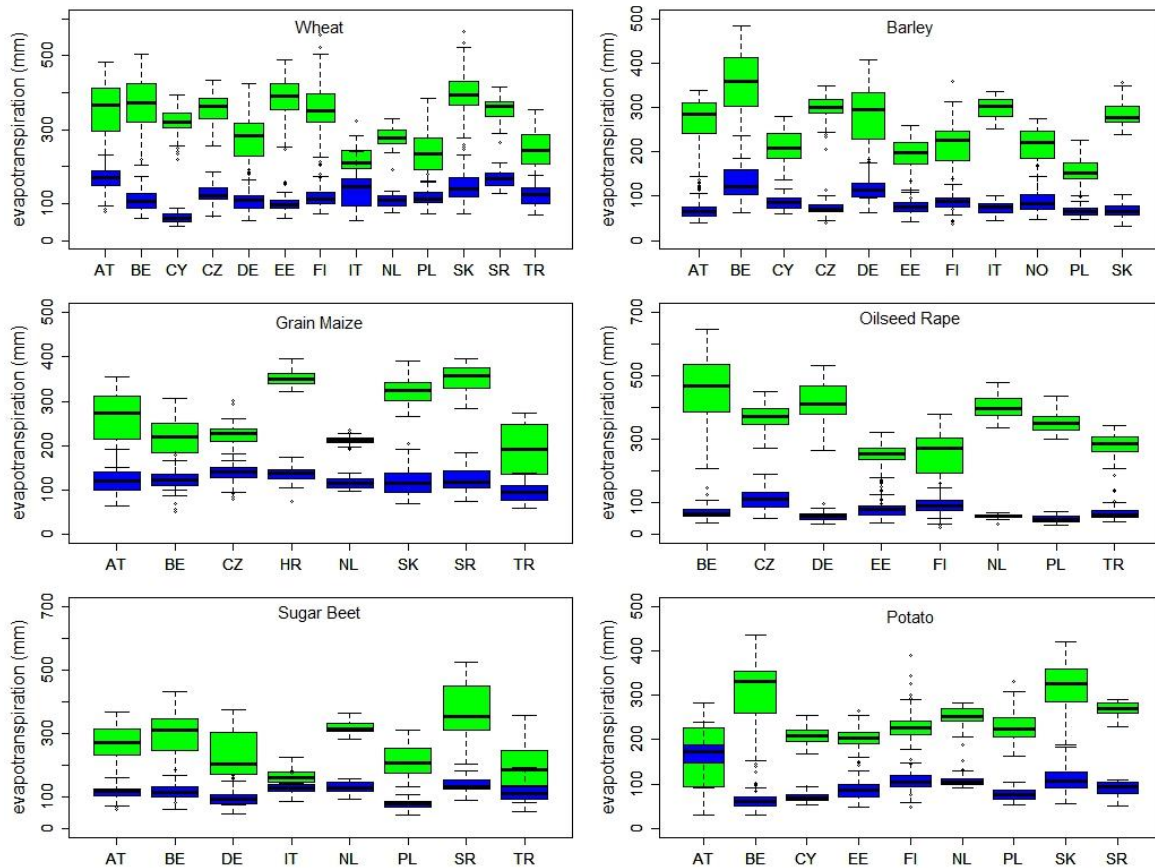
233

234

235 3.2. Soil evaporation and crop transpiration

236 The crop evapotranspiration comprised two major components, i.e. soil evaporation and crop
 237 transpiration. At sowing and planting soil evaporation was relatively high and crop transpiration
 238 low. As the growing season progresses crop transpiration represented the largest share of the
 239 evapotranspiration (Figure 6). After maturity the contribution of evaporation largely depends on the
 240 time between maturity and harvest. Overall a large variability was observed between the different
 241 European regions and was attributed mostly to transpiration. Summer crops had the largest
 242 variability (Figure 6), and this variability became less under irrigation (Figure 7).

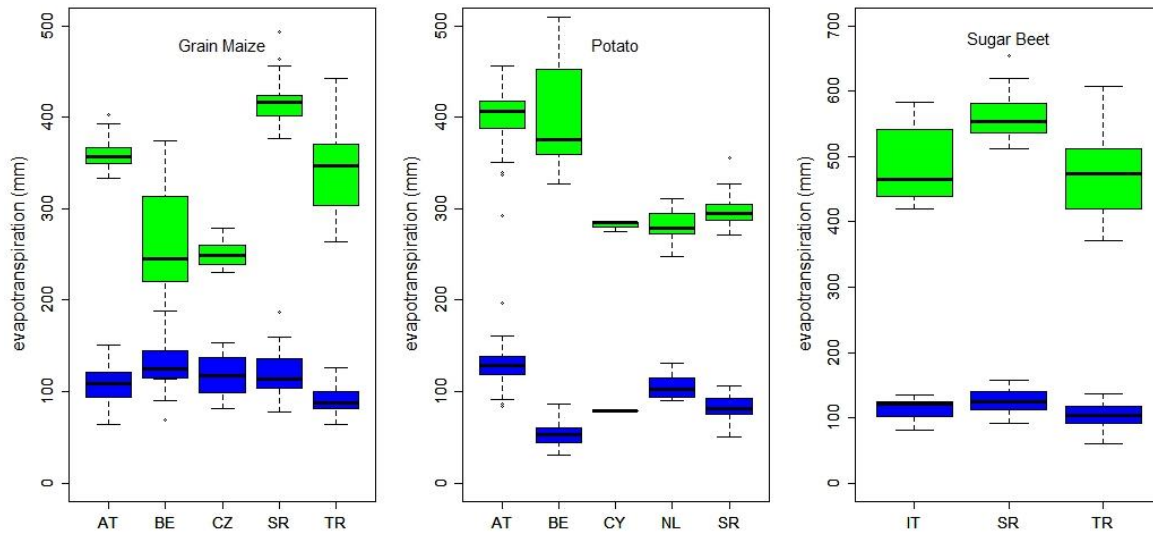
243



244

245 **Figure 6.** Transpiration (T in mm, green) and evaporation (E in mm, blue) for major arable crops across the
 246 European regions for the period 1992-2012. A two letter code refers to the country that the region belongs to.

247



248

249 **Figure 7.** Transpiration (T in mm, green) and evaporation (E in mm, blue) for irrigated summer crops across the
 250 European regions for the period 1992-2012. A two letter code refers to the country that the region belongs to.

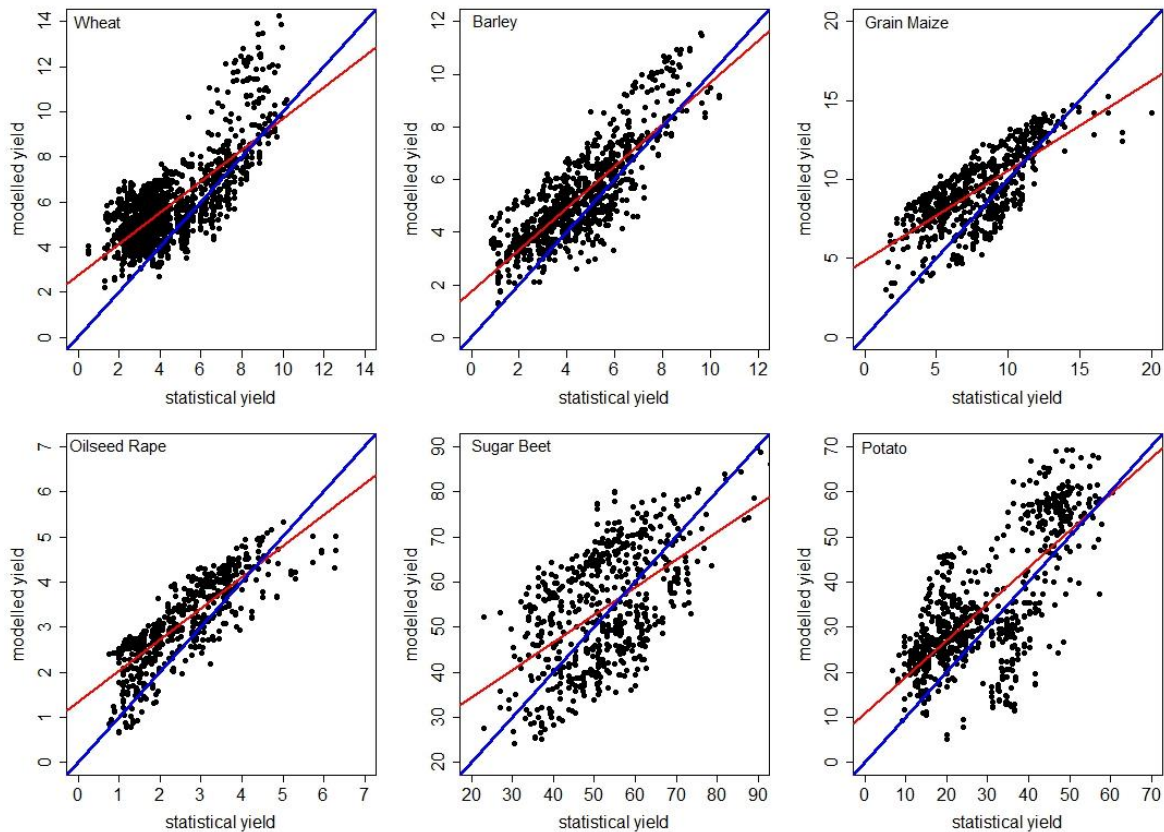
251

252

253 3.3. Biomass and Yield

254 The total biomass and yield were modelled in dry weight using “Aquacrop”. For reasons of
 255 comparison with statistical yields, modelled yield and biomass were converted to fresh weight
 256 assuming humidity at harvest of 14% for cereals, 80% for root crops and 9% for oilseed rape [25].

257 An overall satisfactory correspondence was observed between modelled and statistical yields
 258 (Figure 8). The modelled results relied on calibrated crop phenological and growth development on
 259 experimental fields [21] or on farmers’ fields. The best agreement between modelled and statistical
 260 yields was obtained for rapeseed ($R^2=0.60$; $MAE=0.7$; $RMSE=0.8$) and barley ($R^2=0.62$; $MAE=1.1$;
 261 $RMSE=1.3$), followed by wheat ($R^2=0.50$; $MAE=1.5$; $RMSE=1.8$) and maize ($R^2=0.48$; $MAE=2.1$;
 262 $RMSE=2.5$). Potato ($R^2=0.48$; $MAE=9.3$; $RMSE=11.2$) and sugar beet ($R^2=0.31$; $MAE=10.0$; $RMSE=11.6$)
 263 showed a weak linear relationship between modelled and statistical yields (Figure 8); where MAE is
 264 mean average error and RMSE is root mean square error [27]. All modelled crop yields were higher
 265 than the corresponding statistical yields owing in part to calibration on experimental and farmers’
 266 fields [21], which were on average more intensively managed than the entire crop area. In addition,
 267 the statistical yields are a simple division of crop production by area harvested and therefore lead to
 268 an overall lower yield than observed on individual farms.



269

270 **Figure 8.** Comparison of modelled and statistical yields (in $\text{Mg}\cdot\text{ha}^{-1}$) and expressed in fresh weight for major
 271 arable crops across the European regions for the period 1992–2012, including the identity line (blue) and a linear
 272 regression of modelled on statistical yield (red).

273

274 The modelled yields ranged from $0.56 \text{ Mg}\cdot\text{ha}^{-1}$ higher for oilseed rape to $5.5 \text{ Mg}\cdot\text{ha}^{-1}$ for potato
 275 as compared to statistical yields (Table 2). Modelled cereal yields had lower variabilities relative to
 276 the mean as compared to statistical cereal yields. Modelled root and tuber crop yields, however, had
 277 larger standard deviations than the corresponding statistical yields. For example, statistical potato
 278 yields ($28.1 \pm 12.6 \text{ Mg}\cdot\text{ha}^{-1}$) were lower and had a lower dispersion than modelled potato yields
 279 ($33.6 \pm 13.9 \text{ Mg}\cdot\text{ha}^{-1}$). The combined inter-regional and inter-annual variabilities relative to the mean were
 280 lower for modelled yields as compared to statistical yields (Table 2). The coefficient of variation was
 281 highest for statistical yields of potatoes (44.9%), closely followed by rapeseed (44.5%) and barley
 282 (42%). The lowest variability was for modelled wheat yields (17%) and statistical sugar beet yields
 283 (22%). Yields were modelled as a fraction of dry harvestable biomass, whereas comparisons between
 284 modelled and statistical yields were made on a fresh weight basis. The harvest index (HI in Table 2),
 285 i.e. the ratio between yield and biomass, enabled conversion to fresh weight biomass. In addition to
 286 humidity at harvest, conversions to fresh weight biomass assumed a humidity of 70% for green
 287 above ground biomass. After conversion, the statistical metrics standard deviation (s) and coefficient
 288 of variation (cv) for biomass were the same as for modelled and statistical yields, respectively.
 289 Higher harvest indices may occur in individual countries, and certainly occur for dry weight
 290 conversions.

291

292

293 **Table 2.** Modelled and statistical yields (in Mg.ha⁻¹) and harvest index (HI in %) for the major arable crops
 294 in Europe for the period 1992-2012. For crop abbreviations see Figure 3.

crop	ystat.m	ystat.s	ystat.cv	ymod.m	ymod.s	ymod.cv	HI
BAR	4.44	1.86	41.88	5.26	1.77	33.54	41
MAZ	7.76	2.92	37.67	9.28	2.27	24.50	41
POT	28.07	12.60	44.88	33.58	13.89	41.35	72
RAP	2.48	1.10	44.50	3.04	0.92	30.26	23
SBT	52.43	11.55	22.02	54.24	12.74	23.48	64
WHB	4.94	2.04	41.27	6.13	1.96	31.91	41
WHD	3.05	0.85	27.99	4.96	0.86	17.43	37

295 Where y is yield (Mg.ha⁻¹); HI is harvest index (%); stat refers to regional statistics and mod to modelled; m
 296 denotes mean, s standard deviation and cv coefficient of variation (%). All figures refer to fresh weight.

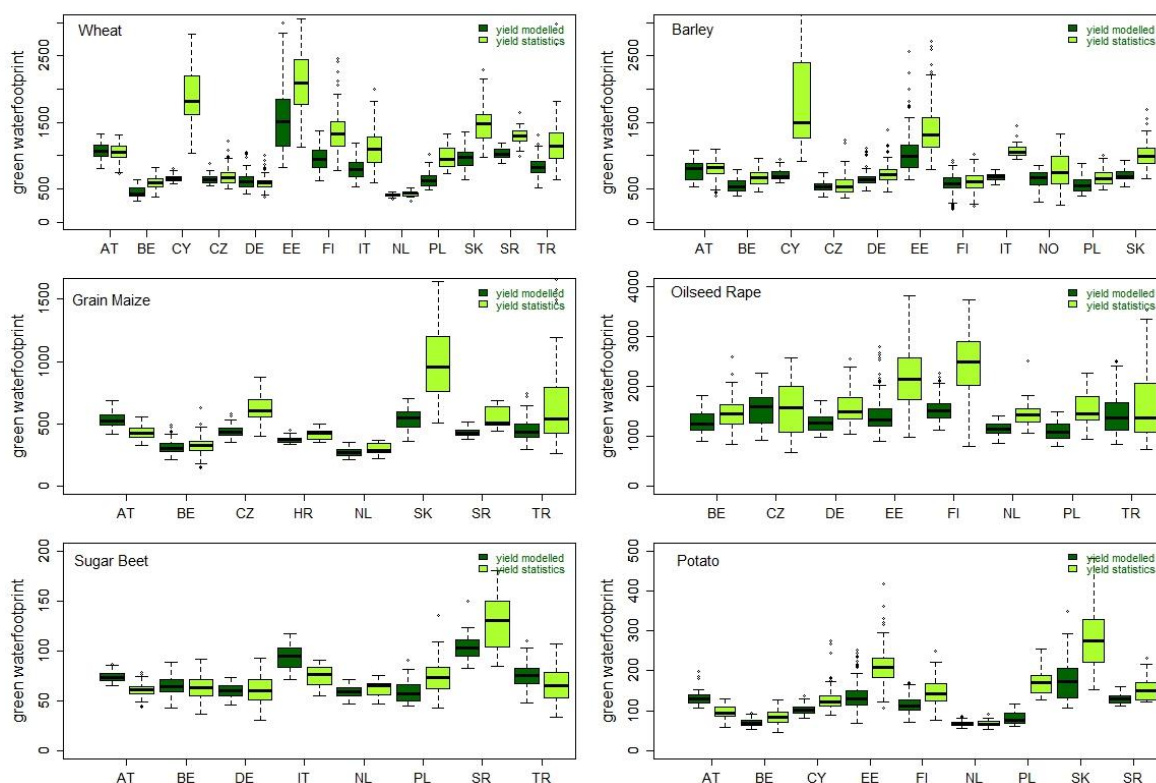
297

298 3.4. Green, Blue and Grey water footprint

299 We calculated the green water footprint (WF) for rainfed crops using both modelled and
 300 statistical yields (Figure 9). Across all European regions the largest green WF was calculated for
 301 oilseed rape (1857 ± 661 m³.Mg⁻¹), durum wheat (1414 ± 720 m³.Mg⁻¹) and common wheat (1108 ± 580
 302 m³.Mg⁻¹), followed by barley (901 ± 458 m³.Mg⁻¹) and grain maize (590 ± 304 m³.Mg⁻¹). The lowest
 303 green WFs were calculated for potatoes (157 ± 75 m³.Mg⁻¹) and sugar beet (67 ± 19 m³.Mg⁻¹). Green
 304 WF calculations with modelled yields were between 1% lower for sugar beet and up to 78% lower
 305 for durum wheat as compared to statistical yields owing to a larger variation in the statistics. The
 306 coefficient of variation was lowest for modelled sugar beet (21%) and highest for modelled wheat
 307 (44%); for statistical yields these were 29% and 52%, respectively. The largest green WF was
 308 calculated for oilseed rape in FI (2410 ± 727 m³.Mg⁻¹) and EE (2191 ± 569 m³.Mg⁻¹), followed by
 309 common wheat in EE (2147 ± 568 m³.Mg⁻¹) and durum wheat in CY (2055 ± 1019 m³.Mg⁻¹). The lowest
 310 green WF was calculated for sugar beet in AT (61 ± 7 m³.Mg⁻¹), DE (61 ± 14 m³.Mg⁻¹), NL (62 ± 8
 311 m³.Mg⁻¹) and BE (63 ± 11 m³.Mg⁻¹).

312 Crop water use and yield, both used for calculating the green WF for rainfed crops, were
 313 significantly correlated. The Pearson correlations of statistical yields with transpiration ($r^2 = 0.33$; $p <$
 314 0.001) were stronger than with evapotranspiration ($r^2 = 0.28$; $p < 0.001$); for modelled yields this was
 315 0.33 and 0.31 , respectively ($p < 0.001$). The green WF decreased exponentially with increasing yields,
 316 which was more pronounced for statistical yields than for modelled yields owing to the presence of
 317 extremely low yields in the statistical series. Regions with extremely low yields in their data records
 318 therefore displayed a larger variability in the green WF (Figure 9). Examples were wheat and barley
 319 in CY and EE; grain maize in SK and TR; oilseed rape in FI and EE; sugar beet in SR; and, potato in
 320 SK. The relationship between the green WF and evapotranspiration was linearly positive but
 321 extremely weak, whereas with transpiration a slightly stronger relation was observed. The
 322 variability in yields, however, dominated the green water footprint.

323



324

325 **Figure 9.** The green water footprint (in m³.Mg⁻¹) for modelled and statistical arable yields across the European
 326 regions for the period 1992-2012. A two letter code refers to the country that the region belongs to.

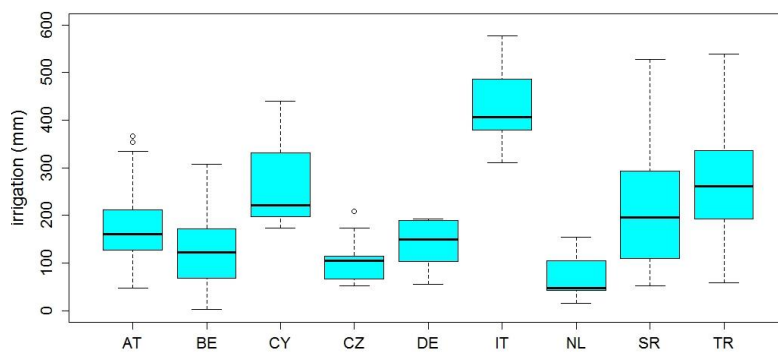
327

328 The combined green and blue water footprint was calculated for irrigated crops, notably grain
 329 maize, potato and sugar beet. Irrigation amounts varied between the different European regions,
 330 reflecting different climatological environments, soil types and growing seasons (Figure 10). The
 331 largest irrigation needs were estimated for sugar beet in IT (434 ± 70 mm), followed by potato in CY
 332 (278 ± 142 mm) and sugar beet in TR (356 ± 108 mm); the lowest irrigation amounts were for potato
 333 in NL (72 ± 47 mm), grain maize in BE (92 ± 63 mm) and CZ (100 ± 41 mm). A larger variation was
 334 observed for sandy textured soils such as present in BE, DE and AT. For SR, CY, TR and IT higher
 335 temperatures and evapotranspiration rates combined with low precipitation amounts resulted in
 336 larger water demands for irrigation (Figure 10). An expected strong linear relation was observed
 337 between irrigation and evapotranspiration ($r^2 = 0.77$; $p < 0.001$). Statistical yields were significantly
 338 correlated with irrigation amounts ($r^2 = 0.27$; $p < 0.001$), evapotranspiration ($r^2 = 0.38$; $p < 0.001$) and
 339 transpiration ($r^2 = 0.45$; $p < 0.001$) during the growing season, suggesting the presence of irrigated
 340 yields in the statistical data.

341 Since no statistical data were available for yields under irrigation, we could only compare
 342 modelled water footprints under irrigated and rainfed conditions. Higher evapotranspiration rates
 343 of up to 155 mm for maize in TR, 205 mm for potato in AT and 304 mm for sugar beet in IT were
 344 accompanied by higher yields of up to 3.1 Mg.ha⁻¹ (48%) for maize in TR, 12.4 Mg.ha⁻¹ (49%) for
 345 potato in AT and 20.7 Mg.ha⁻¹ (50%) for sugar beet in TR. The combined increases in yields and
 346 evapotranspiration rates resulted in increases in the WFs of irrigated crops. When comparing
 347 irrigated to rainfed conditions, we estimated WF increases of between 4 m³.Mg⁻¹ (5%) for potato in
 348 BE and 33 m³.Mg⁻¹ (6%) for maize in AT; the range in percentages varied from 1% (6 m³.Mg⁻¹) for
 349 maize in TR to 25% (18 m³.Mg⁻¹). The WF under irrigated conditions was dominated by green water
 350 (Figure 11), which in turn was mostly influenced by yields. The highest blue and green WF was for
 351 grain maize in AT (566 ± 79 m³.Mg⁻¹) and TR (457 ± 59 m³.Mg⁻¹), followed by potato in AT (142 ± 18

352 $\text{m}^3.\text{Mg}^{-1}$) and SR ($134 \pm 17 \text{ m}^3.\text{Mg}^{-1}$). The lowest blue and green WFs were for potato in BE and NL (74
 353 $\pm 9 \text{ m}^3.\text{Mg}^{-1}$). The variability, as measured by the coefficient of variation, was higher for blue water
 354 (12 - 126%) than for green water (7 - 20%). The coefficient of variation for the combined green and
 355 blue WF of irrigated crops was 34% for potato, 25% for maize and 18% for sugar beet. The lowest
 356 coefficient of variation were for maize in CZ (9%) and potato in CY (10%); the highest were for maize
 357 in BE (19%) and sugar beet in IT (17%).

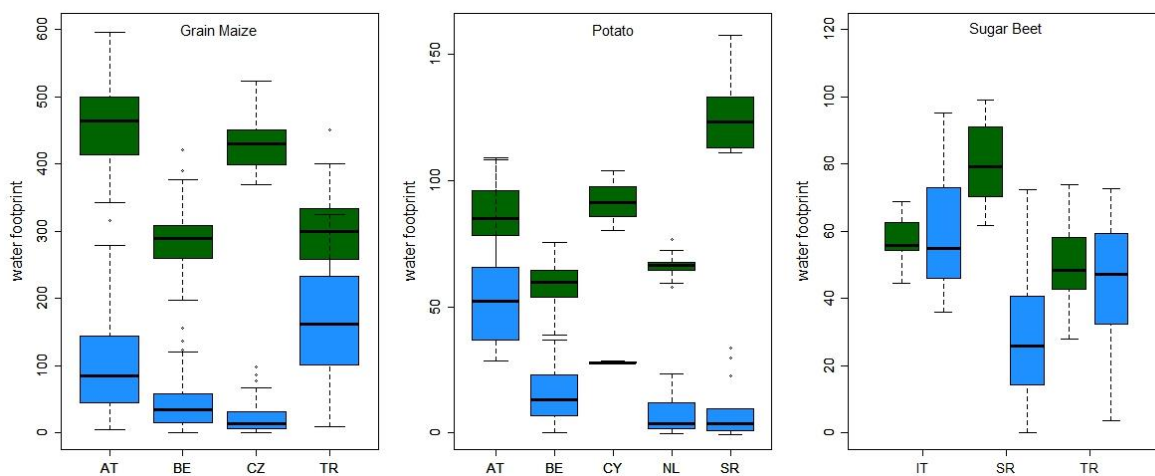
358



359

360 **Figure 10.** Irrigation (in mm) during the cropping season across the European regions for the period 1992-2012.
 361 A two letter code refers to the country that the region belongs to.

362



363

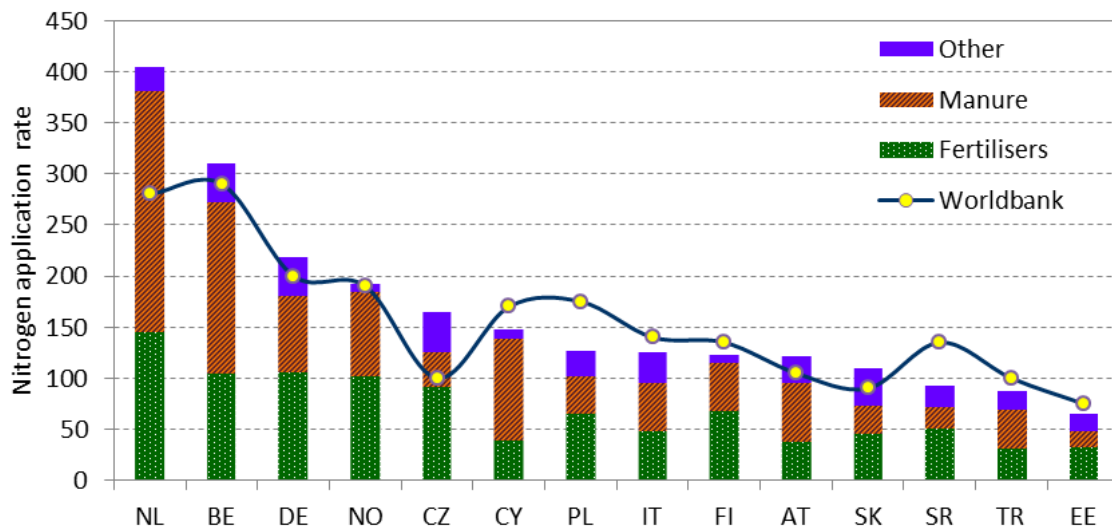
364 **Figure 11.** The blue water footprint (in $\text{m}^3.\text{Mg}^{-1}$) for modelled yields of irrigated arable crops across the
 365 European regions for the period 1992-2012. A two letter code refers to the country that the region belongs to.

366

367 We calculated the grey water footprint on the basis of four different nitrogen application rates: a
 368 reported rate, a maximum rate derived from local field experiments, and a rate based on nutrient
 369 balance calculations according to Eurostat and World Bank (Figure 12). We assumed an equal
 370 occurrence of the four considered nitrogen application rates but with a maximum of $250 \text{ kg N}.\text{ha}^{-1}$ in
 371 accordance with the European Nitrogen Directive. The highest potential nitrogen inputs are in NL
 372 and BE owing to a large share of animal manure in fertilizer application rates, followed by DE and
 373 NO with a much lower share of manure; the lowest nitrogen inputs are in TR and EE. For all regions
 374 the grey WF was larger for statistical yields than for modelled yields (Figure 13). An inter-annual
 375 and interregional comparison of the different crops showed the largest grey WF for oilseed rape (268
 376 $\pm 100 \text{ m}^3.\text{Mg}^{-1}$), barley ($158 \pm 72 \text{ m}^3.\text{Mg}^{-1}$) and wheat ($131 \pm 39 \text{ m}^3.\text{Mg}^{-1}$), followed by grain maize ($91 \pm$

377 35 m³.Mg⁻¹) (Figure 13). The lowest grey WF was observed for sugar beet (13 ± 3 m³.Mg⁻¹) and potato
 378 (26 ± 7 m³.Mg⁻¹). The coefficient of variation (*cv*) for the grey WF calculated with statistical yields was
 379 46% for barley, 38% for maize and rapeseed, 30% for wheat, 28% for potato and 22% for sugar beet;
 380 for the grey WF calculated with modelled yields the order was different: rapeseed (43%), barley
 381 (32%), wheat (30%), maize and potato (27%), and sugar beet (25%). Autumn sown crops showed
 382 large grey WFs, e.g. rapeseed in FI (409 ± 71 m³.Mg⁻¹), barley and wheat in CY (321 ± 131 m³.Mg⁻¹; 327
 383 ± 209 m³.Mg⁻¹) and rapeseed in NL (310 ± 69 m³.Mg⁻¹). The lowest grey WFs were observed for sugar
 384 beet in all regions, ranging between 8 ± 1 m³.Mg⁻¹ in AT and 15 ± 2 m³.Mg⁻¹ in BE. The largest *cv* was
 385 for wheat in CY (64%) and maize in TR (57%), whereas the lowest *cv* occurred for potato in NL (9%)
 386 and sugar beet in DE (10%).

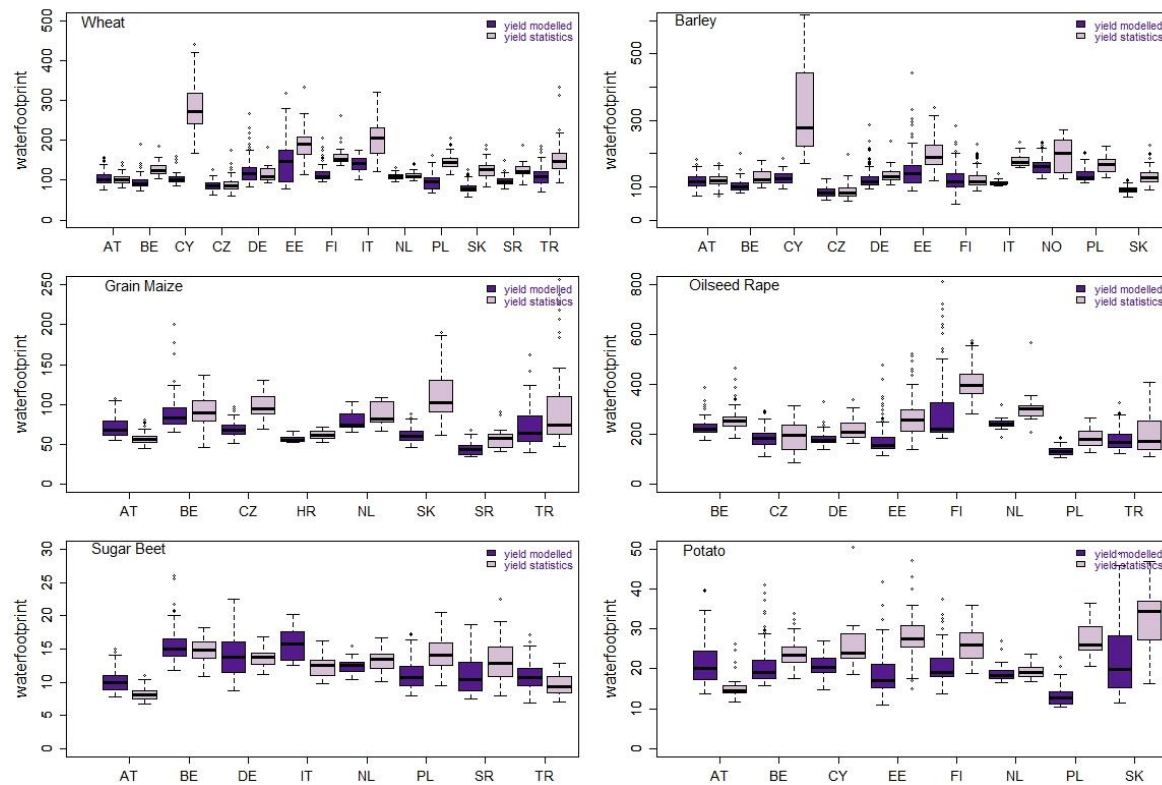
387



388

389 **Figure 12.** Nitrogen application rates on arable land (in kg N.ha⁻¹) according to Eurostat [23] and World Bank
 390 [24] for the period 2006-2012. Other are soil amendments such as compost, sewage sludge and industrial waste.
 391 A two letter code refers to the country that the region belongs to.

392



393

394 **Figure 13.** Grey water footprint (in $\text{m}^3.\text{Mg}^{-1}$) for modelled and statistical arable yields for the period 1992-2012
 395 and for four different nitrogen application rates. Note the differences in scale between crops. A two letter code
 396 refers to the country that the region belongs to.

397

398 4. Discussion

399 We used the “Aquacrop” model to estimate crop growth and evapotranspiration under both
 400 rainfed and irrigated conditions. This model has been developed to simulate yield response to water
 401 under water-limited conditions [18, 19, 20]. Regions, crops and soils that are sensitive to dry spells
 402 and drought provide for a water-limited environment. Reviews of model behaviour show mixed
 403 results with respect to water use efficiencies and yields [28]. An intercomparison of eight models
 404 showed between 13% and 19% uncertainty in the estimation of evapotranspiration (“Aquacrop”: $cv = 15\%$),
 405 and between 13% and 34% for transpiration (“Aquacrop”: $cv = 24\%$) for wheat [21].

406 The green WF showed the largest variability for cereals ($cv = 51\text{-}52\%$), closely followed by
 407 potato ($cv = 48\%$); the lowest variability was for oilseed rape ($cv = 36\%$) and sugar beet ($cv = 28\%$)
 408 (Table 3). For all arable crops, the yield is more variable ($\overline{cv} = 45\%$; cv in Table 2) than the crop
 409 evapotranspiration ($\overline{cv} = 21\%$; cv in Table 3). This clearly demonstrates the importance of yields and
 410 their variability for the water footprint. Root and tuber crops have much lower WFs as compared to
 411 cereals and oilseed crops (Table 3), owing to a combined effect of higher yields and higher moisture
 412 contents at harvest. Cereals and oilseed crops have a much smaller harvestable fraction of the total
 413 biomass produced per surface area, and therefore have larger water footprints.

414 Between the different regions in Europe, high yielding western European regions have WFs
 415 that can be up to six times lower than the WFs of regions in northern or southern Europe (Figure 9,
 416 Figure 11, Figure 13). A threefold increase can occur between seasons, certainly in regions with
 417 variable yields. An analysis of variance (ANOVA) demonstrated clear effects of crops, countries,
 418 seasons and their factorial interactions on the green water footprint ($p < 0.001$). The largest
 419 variability between seasons is for the southern (CY, TR) and northern countries (EE, FI, NO) and for
 420 WHD, BAR and RAP. The variability between countries ($\overline{cv} = 14\%$; range: 7% - 26%) is lower than

421 the variability between seasons ($\overline{cv} = 22\%$; range: 10% - 50%) and the variability between crops (\overline{cv}
 422 = 46%; range: 29% - 52%).

423

424 **Table 3.** Green WF (WFg in $\text{m}^3\cdot\text{Mg}^{-1}$) and evapotranspiration (ET in mm) for the major arable crops in
 425 Europe for the period 1992-2012. For crop abbreviations see Figure 3.

crop	WFg.m	WFg.s	WFg.cv	ET.m	ET.s	ET.cv
RAP	1857	661	36	405	103	25
WHB	1108	580	52	459	87	19
WHD	1414	720	51	375	62	17
BAR	901	458	51	337	82	24
MAZ	590	304	52	373	73	20
POT	157	75	48	332	64	19
SBT	67	19	29	351	86	25

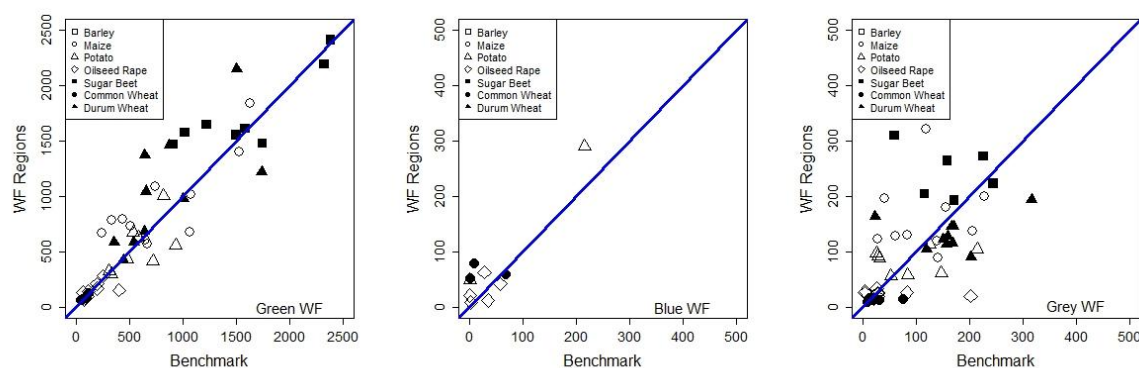
426 Where m denotes mean, s standard deviation and cv coefficient of variation (%).

427

428 The breakdown of the crop water footprints in different components enabled a better
 429 understanding of the different contributing factors involved. A comparison between our
 430 calculations for the European regions and water footprint benchmarks for crop production provided
 431 by [16], revealed a good agreement for the green WF ($R^2 = 0.80$; $d = 0.95$), a reasonably good
 432 agreement for the blue WF ($R^2 = 0.64$; $d = 0.91$) and a lower agreement for the grey WF ($R^2 = 0.25$; $d =$
 433 0.73), where R^2 is the coefficient of determination and d is the index of agreement [27]. Overall the
 434 best fit was obtained for the green WF (Figure 14). All WF were highly influenced by yield so that
 435 only well calibrated models able to model yield can be successfully deployed to estimate the WF.
 436 Yield variability determined the WF variability.

437

438



439

440 **Figure 14.** Comparison of green, blue and grey WF of this study with benchmark WF [16] in $\text{m}^3\cdot\text{Mg}^{-1}$ for arable
 441 crops. The blue line represents the identity line.

442

443 Crop growth and production are mostly affected by the distribution of green water during the
 444 growing season. Blue water directly influences the yield provided water is available for irrigation:
 445 we modelled yield increases of up to 50% which highlight the benefits of irrigation. Water scarcity,
 446 exacerbated further by climate change, is an issue of major concern in arid and semi-arid regions
 447 with serious impacts on food security, sustainability and economy. The fact that the majority of

448 available water is consumed by agricultural activities, particularly in arid and semi-arid countries,
449 underpins the need for monitoring and reducing water consumption patterns in agricultural areas.
450 Our modelled yield increases did not result in lower crop WFs under sprinkler irrigation; drip
451 irrigation may result in lower WFs as calculated by [14]. The WF of agricultural crops allows for
452 decision making and better management of the water potential.

453 Applied to agricultural production the grey WF is the amount of freshwater required for the
454 assimilation of any pollutant, *in casu* nitrogen runoff due to agricultural crop production. Nitrogen
455 application rates differ considerably between regions, and regulations are in place to limit the input
456 for example in nitrogen vulnerable zones or nature conservation areas [30]. Other important sources
457 of variation are crop type, farming system, soil type, and the rainfall-runoff regime. When runoff
458 and drainage were taken into account (Figure 5), the grey WF showed a lot more variability between
459 the years and could be as low as zero during some years for summer crops. In addition, the pollution
460 and hence grey water is attributed to a single crop thereby neglecting the role of a crop in the
461 rotation. For example oilseed rape had a high grey WF, despite the crop's capacity to deplete
462 nitrogen from the previous crop before winter and therefore reduce N leaching. A contrary example
463 is the high leaching risk of bare soil during winter prior to sugar beet. These effects were not
464 incorporated in the applications of the grey water footprint of crops [13, 16]. Recent applications
465 concentrated on a nitrogen balance to budget uptake and losses, and arrived at higher estimates of
466 nitrogen-related water pollution in river basins owing to differences in computational methods [31].
467 Therefore the grey WF should be compared with caution between studies and agricultural systems.

468 Practices to reduce the WF of crop production start with awareness of the WF of different crop
469 management systems. A transition to less water-demanding crops with higher water productivities
470 or higher water use efficiencies offers opportunities to optimize plant water use. Soil and water
471 conservation techniques and water saving irrigation methods, e.g. drip irrigation and deficit
472 irrigation, could further reduce water demands [14]. Advanced techniques lower the crop water
473 demand, but cannot markedly decrease the WF; achieving more stable and higher yields, however,
474 can. The high dependency on yield warrants strategies to increase agricultural productivity which is
475 accomplished through breeding programs and/or through optimizing resources use during the crop
476 growth season. The grey WF is partly regularized through the Water Framework and Nitrates
477 Directives with designated nitrate vulnerable zones and limitations on nitrogen and phosphorus
478 applications [30]. Ensuring that water quality is minimally affected offers good perspectives for
479 nutrient smart precision farming. Overall the water footprint and its assessment process helps
480 establish a greater awareness of water consumption patterns among different stakeholders involved.
481

482 5. Conclusions

483 We calculated the green and blue water footprint with FAO's "Aquacrop" model, and the grey
484 water footprint on the basis of nitrogen application rates for six major arable crops in 45 locations
485 across Europe for the period 1992-2012. The WF of cereals is larger than the WF of tuber and root
486 crops owing mainly to the difference in yield and moisture content at harvest between these crop
487 types. Since yield has a larger variability than crop water use, yield estimates are of paramount
488 importance to the crop WF. The WF for wheat, for example, can be up to five or six times larger in
489 northern and southern Europe as compared to high yielding western European regions. The WF
490 variability between crops was larger than the variability between seasons and in turn larger than the
491 variability between countries. Yield increases under sprinkler irrigation were not high enough to
492 reduce the water footprint. Water saving irrigation and soil conservation techniques, however, may
493 result in WF reductions. The green and blue WF, but not the grey WF, compared favourably with
494 internationally available benchmark values. Confronted with drainage and runoff, the grey WF
495 tended to overestimate the contribution of nitrogen to the surface and groundwater. Other
496 agro-hydrological methods to calculate the grey WF resulted in even larger values which points to
497 caution when comparing different studies. The large variability between crops, regions and seasons;

498 and between yields and water use as major components of the WF highlights the importance of crop
499 yield variability. The water footprint is a measurable indicator that may support European water
500 governance.
501

502 **Acknowledgments:** The authors acknowledge funding from COST ES1106, Belgian Science Policy contract
503 number SD/RI/03A, JPI FACCE MACSUR (D.M. 24064/7303/15), the Czech project LD13030, the Ministry of
504 Education, Youth and Sports of the Czech Republic within the National Sustainability Program I (NPU I), grant
505 number LO1415, and contract nr III43007 of the Ministry of Education and Science of the Republic of Serbia. The
506 authors thank their national meteorological services and institutes for providing weather data. Support for data
507 collection is acknowledged from Sabina Thaler for Austrian data, Eva Pohanková for Czech data and Toprak
508 Aslan for Turkish data.

509 **Author Contributions:** Anne Gobin, Kurt Christian Kersebaum, Josef Eitzinger and Mirek Trnka conceived
510 and designed the experiments of calculating the water footprint. "Aquacrop" model runs were performed by
511 Anne Gobin. All authors contributed to data collection and interpretation of the results.

512 **Conflicts of Interest:** The authors declare no conflict of interest.

513

514 **Appendix A**

515

516 The dominant soil type(s) and meteorological stations of each region are provided in Table 1,
 517 together with references to relevant datasets. Crop characteristics used for calibration are provided
 518 in Table 2.

519 **Table 1.** Soil hydrological properties of the topsoil for different locations across Europe.

CTRY	Location	Soil Type	Texture ¹	FC (%)	WP (%)	Pore Space	Ref
AT	Gross Enzersdorf	Chernozem	Silt Loam	35	21	43	[32]
AT	Gross Enzersdorf	Parachernozem	Sandy Loam	28	8	39	
AT	Gross Enzersdorf	Fluvisol	Clay Loam	35	22	42	
AT	Fuchsenbigl	Calcaric Chernozem	Silt Loam	38	23	53	
BE	Koksijde	Calcaric & Gleyic Fluvisol	Marine Clay	39	23	50	[33, 34,
BE	Gent	Albeluvisol	Sandy Loam	22	10	47	35]
BE	Peer	Podzol	Loamy Sand	16	8	46	
BE	Ukkel	Luvisol	Silty Loam	34	12	49	
CY	Larnaca	Chromic Vertisol	Clay	42	28	50	[36, 37]
CY	Nicosia	Vertic-Chromic Luvisol	Clay Loam	38	24	46	
CY	Pafos	Eutric Fluvisol	Loam	32	18	46	
CZ	Domaninek	Dystric Cambisol	Loam	30	15	47	[38]
CZ	Lednice	Chernozem	Silt Loam	35	16	49	
CZ	Verovany	Chernozem	Silt Loam	33	14	47	
DE	Manschnow	Fluvic Gleysol	Clay loam	39	15	46	[39]
DE	Manschnow	Cambisol	Sandy Loam	31	9	40	[39]
DE	Manschnow	Podzol	Sandy Loam	14	5	42	[39]
DE	Müncheberg	Eutric Cambisol	Loamy sand	26	11	36	[40,41]
DE	Braunschweig	Luvisol	Sandy Loam	24	6	46	[41]
EE	Kuusiku	Calcic Luvisol	Silt Loam	28	7	40	[42]
EE	Väike-Maarja	Calcaric Cambisol	Sandy Loam	28	8	45	
EE	Tartu	Mollic Cambisol	Loam	30	9	48	
EE	Võru	Stagnic Luvisol	Loamy Sand	20	6	42	
EE	Tallinn	Haplic Albeluvisol	Sand	16	3	44	
EE	Kuressaare	Gleysol	Clay	35	22	50	
EE	Pärnu	Gleysol	Clay loam	32	20	48	
FI	Jokioinen	Haplic Umbrisol	Silt loam	35	21	45	[43]
FI	Mikkeli	Mollic Cambisol	Sandy Loam	28	7	42	
FI	Ylistaro	Verti-Gleyic Cambisol	Silt Loam	35	15	48	
FI	Laukaa	Eutric Regosol	Silty Clay	46	25	55	
FI	Piikkiö	Vertic Cambisol	Clay Loam	36	22	48	
HR	Križevci	Gleyic Luvisol	Silt loam	36	12	41	[44]
IT	Foggia	Alluvial vertisol	Clay Loam	42	24	55	[45]
IT	Radicefani	Vertic Cambisol	Silty Clay	42	27	51	[46, 47]
NL	Lelystad	Gleyic Fluvisol	Marine Clay	36	16	45	[48]
NO	Søråsjordet	Gleyic Podzoluvisol	Silt Loam	37	20	50	[49]
PL	Dąbrowice	Podzol	Loamy Sand	23	17	40	
SK	Jasl.Bohunice	Chernozem	Silty Loam	34	14	44	[50]
SK	Nitra	Luvisol	Clay Loam	36	17	44	
SK	Bratislava	Fluvisol	Sandy Loam	32	12	44	
SK	Hurbanovo	Phaeozem	Clay Loam	35	18	44	
SR	Rimski Sancevi	Chernozem	Loam	34	17	51	[51]
TR	Kirklareli	Cambisol	Sandy Clay Loam	35	17	42	[52]
TR	Tekirdağ	Fluvic Cambisol	Sandy Clay Loam	39	28	46	[53]
TR	Edirne	Cambisol	Clay Loam	37	23	41	[53]

520

¹ Soil texture is classified according to the USDA nomenclature.

521
522

523

Table 2. Planting (P) and harvesting (H) dates of arable crops in the different regions.

Region*	WHB/WHD P; H	BAR P; H	RAP P; H	MAZ P; H	POT P; H	SBT P; H
AT	12/10; 30/7	25/3; 30/6		7/5; 26/9	16/4; 5/9	12/4; 18/8
BE	15/10; 1/8	15/10; 15/7	15/9; 15/7	1/5; 30/9	10/4; 30/9	10/4; 15/10
CY	15/11; 30/5	15/11; 4/5			15/1; 24/5	
CZ	3/10; 30/7	30/3; 25/7	28/8; 20/7	30/4; 15/9		
DE-1	2/10; 30/7	20/9; 15/7	28/8; 24/7			16/5; 15/9
DE-2	25/10; 30/7	25/9; 25/6				15/4; 30/9
EE	30/8; 10/8	25/4; 3/8	1/5; 15/9		5/5; 10/9	
FI-1	30/8; 20/8	15/5; 20/8	15/5; 10/9		15/5; 10/9	
FI-2	10/9; 15/8	10/5; 15/8	10/5; 1/9		15/5; 5/9	
HR				29/4; 3/10		
IT-1	15/11; 20/6					22/3; 18/8
IT-2	15/11; 15/7	15/11; 10/7				
NL	20/10; 30/7		5/9; 17/7	30/4; 15/10	25/4; 20/9	10/4; 15/10
NO		25/4; 15/8				
PL	20/9; 14/7	24/4; 16/7	28/8; 17/8		15/4; 30/9	15/4; 20/9
SK	7/10; 20/7	24/3; 10/7		20/4; 3/9	15/4; 15/9	
SR	15/11; 10/7			20/4; 30/9	30/3; 10/7	30/3; 15/10
TR	15/11; 30/6		30/9; 15/6	9/4; 20/8		15/3; 20/8

* For the name of the region see table 1

524
525

526 **References**

- 527 1. Hoekstra, A.Y.; Mekonnen, M.M. The water footprint of humanity. *Proceedings of the national academy of*
528 *sciences*. **2012**, 109(9): 3232-7.
- 529 2. Ciais, P.; Reichstein, M.; Viovy, N.; Granier, A.; Ogee, J.; Allard, V.; Aubinet, M.; Buchmann, N.; Bernhofer,
530 C.; Carrara, A.; Chevallier, F.; De Noblet, N. A.; Friend, D.; Friedlingstein, P.; Grünwald, T.; Heinesch, B.;
531 Keronen, P.; Knohl, A.; Krinner, G.; Loustau, D.; Manca, G.; Matteucci, G.; Miglietta, F.; Ourcival, J.M.;
532 Papale, D.; Pilegaard, K.; Rambal, S.; Seufert, G.; Soussana, J.F.; Sanz, M.J.; Schulze, E.D.; Vesala, T.;
533 Valentini, R. Europe-wide reduction in primary productivity caused by the heat and drought in 2003.
534 *Nature* **2005**, 437(7058): 529-33.
- 535 3. COPA-COGECA. Assessment of the impact of the heat wave and drought of the summer of 2003 on
536 agriculture and forestry. Fact sheets of the Committee of Agricultural Organisations in the European
537 Union and the General Committee for Agricultural Cooperation in the European Union, **2003**.
- 538 4. Dai, A. Increasing drought under global warming in observations and models. *Nature Climate Change*,
539 **2013**, 3(1): 52-58.
- 540 5. Trnka, M.; Olesen, J.E.; Kersebaum, K.C.; Skjelvag, A.O.; Eitzinger, J.; Seguin, B.; Peltonen Sainio, P.;
541 Rotter, R.; Iglesias, A.; Orlandini, S.; Dubrovsky, M.; Hlavinka, P.; Balek, J.; Eckersten, H.; Cloppet, E.;
542 Calanca, P.; Gobin, A.; Vucetic, V.; Nejedlik, P.; Kumar, S.; Lalic, B.; Mestre, A.; Rossi, F.; Kozyra, J.;
543 Alexandrov, V.; Semeradova, D.; Zalud, Z. Agroclimatic conditions in Europe under climate change.
544 *Global Change Biology*, **2011**, 17(7): 2298-2318.
- 545 6. Trnka, M.; Hlavinka, P.; Semenov, M.A. Adaptation options for wheat in Europe will be limited by
546 increased adverse weather events under climate change. *J. R. Soc. Interface*, **2015**, 12: 2015072
- 547 7. Damerau, K.; Patt, A.G.; van Vliet, O.P. Water saving potentials and possible trade-offs for future food and
548 energy supply. *Global Environmental Change*, **2016**, 39:15-25.
- 549 8. Allan, J.A. Virtual water: a strategic resource, global solutions to regional deficits. *Ground Water* **1998**,
550 36(4): 545-546.
- 551 9. Zoumides, C.; Bruggeman, A.; Hadjidakou, M.; Zachariadis, T. Policy-relevant indicators for semi-arid
552 nations: The water footprint of crop production and supply utilization of Cyprus. *Ecological Indicators* **2014**,
553 43: 205-214.
- 554 10. Ridoutt, B.G.; Pfister, S. A revised approach to water footprinting to make transparent the impacts of
555 consumption and production on global freshwater scarcity. *Global Environmental Change*, **2010**, 20(1),
556 pp.113-120.
- 557 11. International Organization for Standardization. ISO 14046: 2014: Environmental Management: Water
558 Footprint—Principles, Requirements and Guidelines; International Organization for Standardization:
559 Geneva, Switzerland, 2014.
- 560 12. Chenoweth, J.; Hadjidakou, M.; Zoumides, C. Quantifying the human impact on water resources: a critical
561 review of the water footprint concept. *Hydrology and Earth System Sciences* **2014**, 18(6): pp.2325-2342.
- 562 13. Mekonnen, M.M.; Hoekstra, A.Y. The green, blue and grey water footprint of crops and derived crop
563 products. *Hydrology and Earth System Sciences* **2011**, 15(5): pp.1577-1600.
- 564 14. Chukalla, A.D.; Krol, M.S.; Hoekstra, A.Y. Green and blue water footprint reduction in irrigated
565 agriculture: Effect of irrigation techniques, irrigation strategies and mulching, *Hydrology and Earth System*
566 *Sciences* **2015**, 19(12): 4877-4891.
- 567 15. Zhuo, L.; Mekonnen, M.M.; Hoekstra, A.Y. The effect of inter-annual variability of consumption,
568 production, trade and climate on crop-related green and blue water footprints and inter-regional virtual
569 water trade: A study for China (1978-2008), *Water Research* **2016**, 94: 73-85.
- 570 16. Mekonnen, M.M.; Hoekstra, A.Y. Water footprint benchmarks for crop production: A first global
571 assessment. *Ecological indicators* **2014**, 46, pp.214-223.
- 572 17. Allen, R.G.; Pereira, L.S.; Raes, D.; Smith, M. Crop evapotranspiration-Guidelines for computing crop
573 water requirements - *FAO Irrigation and drainage paper* 56, **1998**. FAO, Rome, 300(9), p.D05109.
- 574 18. FAO crop-model to simulate yield response to water. Available online (last accessed on 23/08/2016):
575 <http://www.fao.org/nr/water/aquacrop.html>
- 576 19. Steduto, P.; Hsiao, T.C.; Raes, D.; Fereres, E. AquaCrop—The FAO crop model to simulate yield response
577 to water: I. Concepts and underlying principles. *Agronomy Journal*, **2009**, 101(3), pp.426-437.
- 578 20. Raes, D.; Steduto, P.; Hsiao, T.C.; Fereres, E. Aquacrop the FAO crop model to simulate yield response to
579 water: II. Main algorithms and software description. *Agronomy Journal*, **2009**, 101(3), pp.438-447.

- 580 21. Kersebaum, K.C.; Kroes, J.; Gobin, A.; Takác, J.; Hlavinka, P.; Trnka, M.; Ventrella, D.; Giglio, L.; Ferrise,
581 R.; Moriondo, M.; Dalla Marta, A.; Luo, Q.; Eitzinger, J.; Mirschel, W.; Weigel, H.-J.; Manderscheid, R.;
582 Hoffmann, M.; Nejedlik, P.; Hösch, J. Assessing the uncertainty of model based water footprint estimation
583 using an ensemble of crop growth models on winter wheat. *Water* this issue.
- 584 22. Rockström, J.; Falkenmark, M.; Karlberg, L.; Hoff, H.; Rost, S.; Gerten, D. Future water availability for
585 global food production: The potential of green water for increasing resilience to global change. *Water Res.*
586 *Res.* **2009**, *45*, p. W00A12
- 587 23. Eurostat. Gross Nutrient Balance. Available online (last accessed on 23/08/2016):
588 http://ec.europa.eu/eurostat/cache/metadata/EN/aei_pr_gnb_esms.htm
- 589 24. World Bank, Fertilizer consumption rates per hectare of arable land. Available online (last accessed on
590 23/08/2016):
591 <http://databank.worldbank.org/data/reports.aspx?source=2&series=AG.CON.FERT.ZS&country>
- 592 25. Eurostat. Handbook for Annual Crop Statistics. European Commission - Eurostat, Directorate E sectoral
593 and regional statistics, Unit E1 Agriculture and Fisheries. Available online (last accessed on 23/08/2016):
594 http://ec.europa.eu/eurostat/cache/metadata/Annexes/apro_acs_esms_an1.pdf
- 595 26. R core group. The R Project for Statistical Computing. Available online (last accessed on 20/11/2016):
596 <https://www.r-project.org/>
- 597 27. Zambrano-Bigiarini M. hydroGOF: Goodness-of-fit functions for comparison of simulated and observed
598 hydrological time series. **2011**. R package version 0.3-2. Available online (last accessed on 23/08/2016):
599 Available at <http://CRAN.R-project.org/package=hydroGOF>.
- 600 28. Evett, S.R.; Tolk, J.A. Introduction: Can Water Use Efficiency Be Modeled Well Enough to Impact Crop
601 Management? *Agronomy Journal*, **2009**, *101* (3): 423-425
- 602 29. Mekonnen, M.M.; Hoekstra, A.Y. The green, blue and grey water footprint of crops and derived crop
603 products. Value of Water Research Report Series No. 47, **2010**, UNESCO-IHE, Delft, the Netherlands.
604 Available online (last accessed on 23/08/2016):
605 <http://www.waterfootprint.org/Reports/Report47-WaterFootprintCrops-Vol1.pdf>
- 606 30. Velthof, G.L.; Lesschen, J.P.; Webb, J.; Pietrzak, S.; Miatkowski, Z.; Pinto, M.; Kros, J.; Oenema, O. The
607 impact of the Nitrates Directive on nitrogen emissions from agriculture in the EU-27 during 2000–2008.
608 *Science of the Total Environment*, **2014**, *468*: 1225-33.
- 609 31. Mekonnen, M.M.; Hoekstra, A.Y.,. Global gray water footprint and water pollution levels related to
610 anthropogenic nitrogen loads to fresh water. *Environmental science & technology* **2015**, *49*(21): 12860-12868.
- 611 32. Eitzinger, J., Trnka, M., Semerádová, D., Thaler, S., Svobodová, E., Hlavinka, P., Siska, B., Takáč, J.,
612 Malatinská, L., Nováková, M., Dubrovský, M., Zalud, Z. Regional climate change impacts on agricultural
613 crop production in Central and Eastern Europe – hotspots, regional differences and common trends. *The*
614 *Journal of Agricultural Science*, **2013**, *151*(6): 787-812.
- 615 33. Gobin, A. Impact of heat and drought stress on arable crop production in Belgium. *Natural Hazards and*
616 *Earth System Sciences*, **2012**, *12*, 1911–1922.
- 617 34. Gobin, A. Modelling climate impacts on arable yields in Belgium. *Climate Research*, **2010**, *44*: 55–68.
- 618 35. Gobin, A. The water footprint of Belgian arable crops. *Italian Journal of Agricultural Meteorology*, **2015**, (3):
619 91-97.
- 620 36. Zoumides, C.; Bruggeman, A.; Zachariadis, T.; Pashiardis, S. Quantifying the poorly known role of
621 groundwater in agriculture: the case of Cyprus. *Water resources management* **2013**, *27*(7):2501-2514.
- 622 37. Camera, C.; Zomeni, Z.; Noller, J., Zissimos, A.; Christoforou, I.; Bruggeman, A. A high resolution map of
623 soil types and physical properties for Cyprus: A digital soil mapping optimization. *Geoderma* **2017**, *285*: 35–
624 49.
- 625 38. Hlavinka, P.; Trnka, M.; Kersebaum, K.; Cermak, P.; Pohankova, E.; Ors_ag, M.; Pokorný, E.; Fischer, M.;
626 Brtnický, M.; Zalud, Z. Modelling of yields and soil nitrogen dynamics for crop rotations by HERMES
627 under different climate and soil conditions in the Czech Republic. *J. Agric. Sci.* **2014**, *152*, 188-204.
- 628 39. Kersebaum, K.C.; Nendel, C. Site-specific impacts of climate change on wheat production across regions of
629 Germany using different CO₂ response functions. *Eur. J. Agronomy* **2014**, *52*, 22-32.
- 630 40. Mirschel, W.; Barkusky, D.; Hufnagel, J.; Kersebaum, K.C.; Nendel, C.; Laacke, L.; Luzi, K.; Rosner, G.
631 Coherent multi-variable field data set of an intensive cropping system for agro-ecosystem modelling from
632 Müncheberg, Germany. *Open Data Journal for Agricultural Research*, **2016**, *2*, 1-10.

- 633 41. Kollas, C.; Kersebaum, K.C.; Nendel, C.; Manevski, K.; Müller, C.; Palosuo, T.; Armas-Herrera, C.M.;
 634 Beaudoin, N.; Bindi, M.; Charfeddine, M.; Conradt, T.; Constantin, J.; Eitzinger, J.; Ewert, F.; Ferrise, R.;
 635 Gaiser, T.; Garcia de Cortazar-Atauri, I.; Giglio, L.; Hlavinka, P.; Hoffmann, H.; Hoffmann, M.P.; Launay,
 636 M.; Manderscheid, R.; Mary, B.; Mirschel, W.; Moriondo, M.; Olesen, J.E.; Öztürk, I.; Pacholski, A.;
 637 Ripoche-Wachter, D.; Roggero, P.P.; Roncossek, S.; Rötter, R.P.; Ruget, F.; Sharif, B.; Trnka, M.; Ventrella,
 638 D.; Waha, K.; Wegehenkel, M.; Weigel, H.-J.; Wu, L. Crop rotation modelling – a European model
 639 intercomparison. *Eur. J. Agron.*, 2015, 70, 98-111.
- 640 42. Kadaja, J.; Saue, T. Effects of different irrigation and drainage regimes on yield and water productivity of
 641 two potato varieties under Estonian temperate climate. *Agricultural Water Management*, 2016, 165: 61-71.
- 642 43. Peltonen-Sainio, P.; Jauhiainen, L.; Hakala, K. Crop responses to temperature and precipitation according
 643 to long-term multi-location trials at high-latitude conditions. *Journal of Agricultural Science*, 2011, 149(1):
 644 49-62.
- 645 44. Vučetić V. Modelling of maize production in Croatia: present and future climate. *Journal of Agricultural
 646 Science* 2011, 149: 145 – 157.
- 647 45. Ventrella D., Stellacci A.M., Castrignanò A., Charfeddine M., Castellini M. 2016. Effects of crop residue
 648 management on winter durum wheat productivity in a long term experiment in Southern Italy. *European
 649 Journal of Agronomy*, 2016, 77, 188-198.
- 650 46. Dalla Marta, A.; Orlando, F.; Mancini, M.; Guasconi, F.; Motha, R.; Qu, J.; Orlandini, S. A simplified index
 651 for an early estimation of durum wheat yield in Tuscany (Central Italy). *Field Crops Research*, 2015, 170, 1-6.
- 652 47. Guasconi, F.; Dalla Marta, A.; Grifono, D.; Mancini, M.; Orlando, F.; Orlandini, S. Influence of climate on
 653 durum wheat production and use of remote sensing and weather data to predict quality and quantity of
 654 harvests. *Italian Journal of Agrometeorology*, 2011, 3, 21-28.
- 655 48. Van Bakel, P.J.T., Massop, H.Th.L., Kroes, J.G., Hoogewoud, J., Pastoors, R., Kroon, T., 2008. Actualisatie
 656 Hydrologie voor STONE 2.3; Aanpassing randvoorwaarden en parameters, koppeling tussen NAGROM
 657 en SWAP, en plausibiliteitstoets. WOT-rapport 57. Wettelijke Onderzoekstaken Natuur & Milieu (MNP),
 658 Alterra, Wageningen, The Netherlands.
- 659 49. Deelstra, J.; Kværnø, S.H.; Skjevdal, R.; Vandsemb, S.; Eggestad, H.O.; Ludvigsen, G.H. A general
 660 description of Skuterud catchment. Jordforsk (now NIBIO) report no. 61/05. ISBN-no.: 82-7467-542-8
- 661 50. Takáč, J.; Skalský, R.; Morávek, A.; Klikušovská, Z.; Bezák, P.; Bárđyová, M. Spatial Patterns of
 662 Agricultural Drought Events In Danube Lowland In the 1961-2013 Period. In: Šiška et al. (eds):
 663 International Scientific Conference Towards Climatic Services. Conference Proceedings. Nitra, Slovakia,
 664 15th – 18th September 2015. SBkS, ČBkS, FEŠRV SPU v Nitre. Nitra, 2015. ISBN 978-80-552-1390-3.
- 665 51. Stričević, R.; Cosić, M.; Djurović, N.; Pejić, B.; Maksimović, L. Assessment of the FAO “Aquacrop” model in
 666 the simulation of rainfed and supplementally-irrigated maize, sugar beet and sunflower. *Agricultural water
 667 management*, 2011, 98: 1615-1621.
- 668 52. Şaylan, L.; Çaldağ, B.; Bakanoğulları, F. Investigation of potential effects of climate change on crop growth
 669 by crop growth simulation models (in Turkish), Project No: 1080567, TUBITAK Project, 2012, 258 pp.
- 670 53. Çakir R., Istranca (Yıldız) Dağı Güneyinde Yer Alan Vertisol Ordusu Topraklarının Toprak
 671 Taksonomisine Göre Belirlenmesi, Toprak ve Su Mühendisliği Yönünden İrdelenmesi, 1997, Doktora Tezi,
 672 Trakya Üniversitesi, 58-59, 118-119 pp.
- 673
 674



© 2016 by the authors. Submitted for possible open access publication under the terms and conditions of the Creative Commons Attribution (CC-BY) license (<http://creativecommons.org/licenses/by/4.0/>).

678

679